

PLATINUMSERIES:HD160



Increases in weight due to electric wheelchairs and wheelchair users require a restraint system that can withstand higher loads. AMF-Bruns developed the PlatinumSeries „Heavy Duty“ after intensive crash tests showed the need for more durable and robust retractors.

The PlatinumSeries is suitable for applications up to 160 kg.

HOW TO SECURE WHEELCHAIR AND OCCUPANT?

The PROTEKTOR securement system includes a 4-point wheelchair tie-down system as well as a 3-point occupant restraint system.

In addition to the correct wheelchair mounting on the vehicle floor, the position of the wheelchair inside the vehicle is also important when securing the person being transported. The proper wheelchair position ensures that the occupant restraint system, such as the shoulder belt, is optimally adjusted to the body, which significantly reduces the risk of injury in the event of an accident.



Training Video

AMF-BRUNS WARRANTIES

- The warranty period is 24 months from the date of purchase.
- Please follow the general instructions and the care instructions.
- If the product is used incorrectly, the warranty will be void.
- Unauthorised modifications of the wheelchair tie-down and occupant restraint system will void the warranty.
- The wheelchair tie-down and occupant restraint system is only suitable for wheelchairs secured in forward facing orientation.
- Warranty claims are only valid if AMF-Bruns original parts are used. The use of AMF-Bruns products in combination with products from other manufacturers is not permitted.
- Warranty claims must be addressed directly to our service and after sales department.
- AMF-Bruns reserves the right to request defective parts for inspection.

AMF-BRUNS SERVICE & AFTER SALES DEPARTMENT

eMail service.hubmatik@amf-bruns.de

EMERGENCIES

To be able to cut the belts quickly in case of an accident, please use an emergency cutter, e.g. the AMF-Bruns one! We recommend to always carry an emergency cutter along in your vehicle.



Item No. 150108

GENERAL INSTRUCTIONS

- AMF-Bruns wheelchair restraint systems are only intended for securing wheelchairs; any other use is considered improper and inappropriate.
- Check the restraint system for damage before use. Defective belts/parts must not be used and must be replaced with original parts.
- In case of an accident, all system parts must be replaced.
- The wheelchair must not be positioned in a place with an active airbag, otherwise the airbag must be deactivated!
- Wheelchairs used for passenger transport in vehicles must comply with ISO 7176-19!

CARE INSTRUCTIONS

- All belts and parts have to be checked before use.
- The belt system has to be cleaned regularly.
- Only use mild cleaning agents.
- Avoid contact of the belt system with oil or corrosive liquids.
- Do not use sharp objects, e.g. knives, for cleaning or maintenance to avoid damaging the belt system.

DECLARATION OF CONFORMITY

The AMF-Bruns Protektor system fulfils the following national and international specifications: DIN 75078-2, EU Directive 2001/85, ISO 10542, Arrêté Ministériel du 02 Juillet 1982 (F), VVR (NL), PSV Accessibility regulations 2000 (GB), AS 2942 - 1994 (AU), ÖNORM V 5603 (A).

The AMF-Bruns PROTEKTOR system was tested in numerous dynamic crash tests according to the specifications of ISO 10542. For the tests, a surrogate wheelchair weighing 85 kg and a dummy weighing 76 kg were subjected to an acceleration of 20 g. All test results were well above the required standards!

Please read the short operation manual carefully before using the product and follow the instructions in the operating instructions of the vehicle!

In addition, we refer to our General Terms and Conditions. These can be viewed on the internet at www.amf-bruns-mobility.com. The instructions reflect the state of knowledge at the time of printing. AMF-Bruns reserves the right to change the instructions without prior notice. Subject to technical changes!



AMF-Bruns GmbH & Co. KG

Hauptstraße 101 | 26689 Apen | Germany

Phone +49 (0) 44 89 / 72 71 01

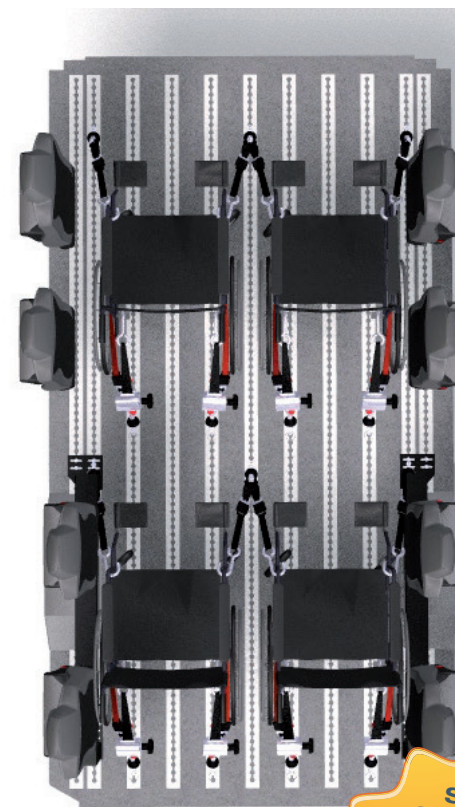
Fax +49 (0) 44 89 / 62 45

hubmatik@amf-bruns.de | www.amf-bruns.de

Short Operation Manual

AMF-BRUNS PROTEKTOR®

Occupant & Wheelchair Restraint System



**SHORT
OPERATION
MANUAL**

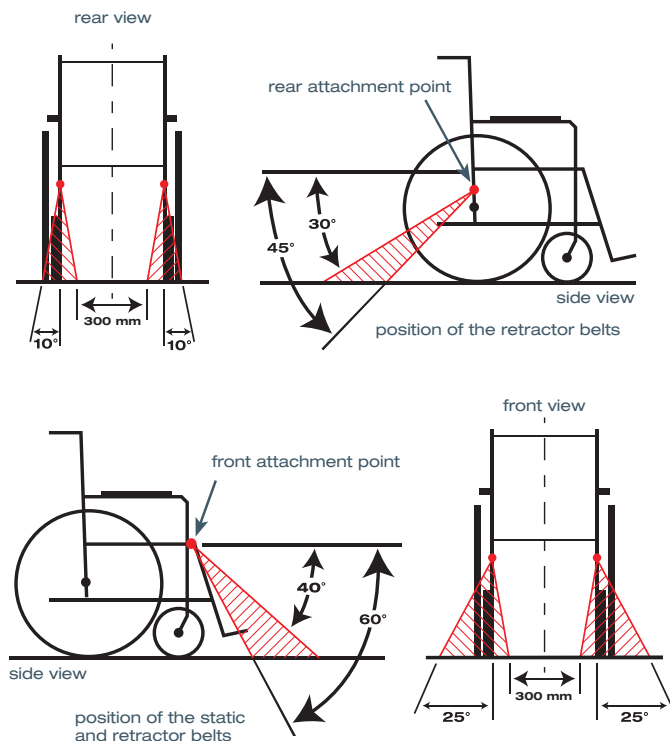
Please read carefully
before using and
keep at hand
inside your vehicle.



www.amf-bruns.de

Item No. 10019406 | 01/2024

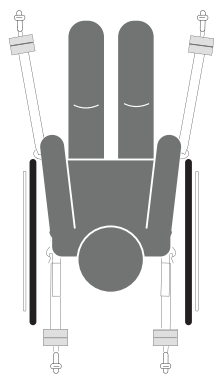
OPTIMAL ATTACHMENT ANGELS AND POINTS FOR THE AMF-BRUNS PROTEKTOR BELT SYSTEM



Required angles and positions of the belts from the wheelchair to the vehicle floor. Front belts should be placed in an angle that ensures optimal lateral stability.

The hatched area indicates where the belts have to be fixed to the vehicle floor.

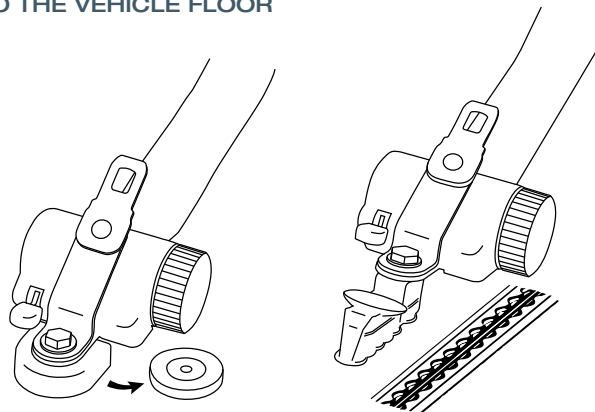
CAUTION! Static and retractor belts must only be attached to the stable tube frame of the wheelchair! Use static belts for front attachment only.



RESTRAINING THE WHEELCHAIR

- Drive the wheelchair into the vehicle in travelling direction.
- The wheelchair is not allowed to be positioned in front of an activated airbag. Airbag needs to be deactivated!
- Check that the position of the belts matches the angles in the illustration above.

ATTACHING THE STATIC AND RETRACTOR BELTS TO THE VEHICLE FLOOR



Mono System

Place the mono fitting flat on the floor and pull it over the floor disc.

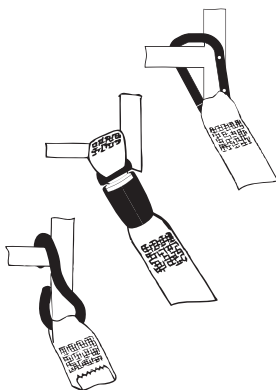
Loosen the mono fitting by sliding it off the floor disc.

Rail System

Insert the 4 stud fitting into the rail and slide it until the lock engages.

Release the fitting by pulling the lock upwards.

ATTACHING THE STATIC AND RETRACTOR BELTS TO THE WHEELCHAIR

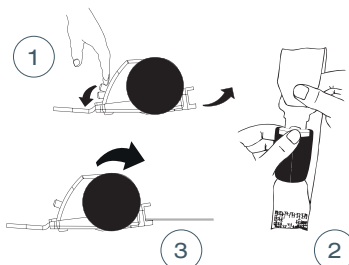


Attachment to the wheelchair

Attach the static and retractor belts to the wheelchair using hook, loop or carabiner.

CAUTION! Static and retractor belts must only be attached to the stable tube frame of the wheelchair!

Under no circumstances should the belts be attached to the footrests or tyres!

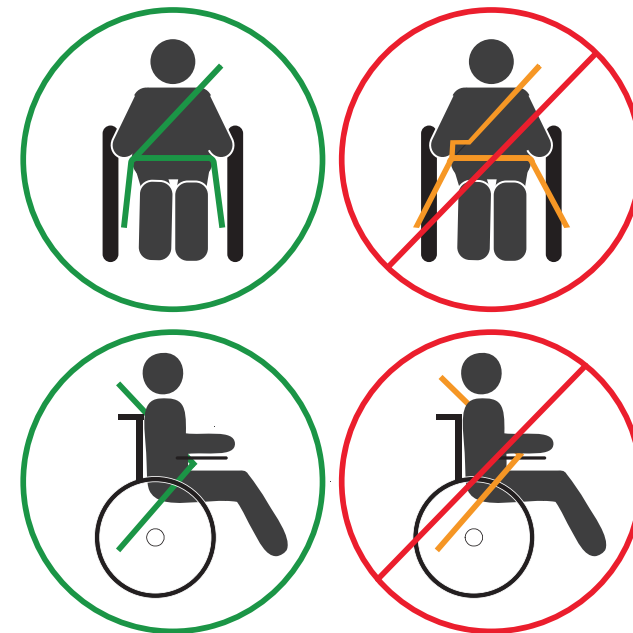


'TIGHTENING' AND 'LOOSENING' THE RETRACTOR BELTS

In figure ① and ② the belts are loosened.

The belt is tensioned In figure ③.

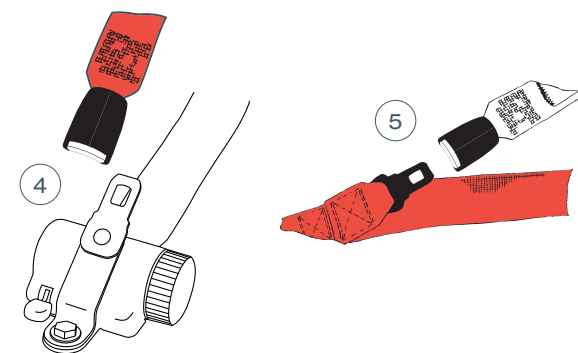
PELVIC AND SHOULDER BELT



Attach the pelvic belt by guiding it backwards along both sides of the body to the retractor belts and click it into the latches located on top of the retractor (figure ④).

Fasten the pelvic belt. Pull the belt strap until it is tight.

Then attach the (automatic) shoulder belt to the latch of the pelvic belt as shown in figure ⑤.



CAUTION! Belts must not be guided over wheelchair components such as armrests or wheels!