

Accessories

SMARTSTEP

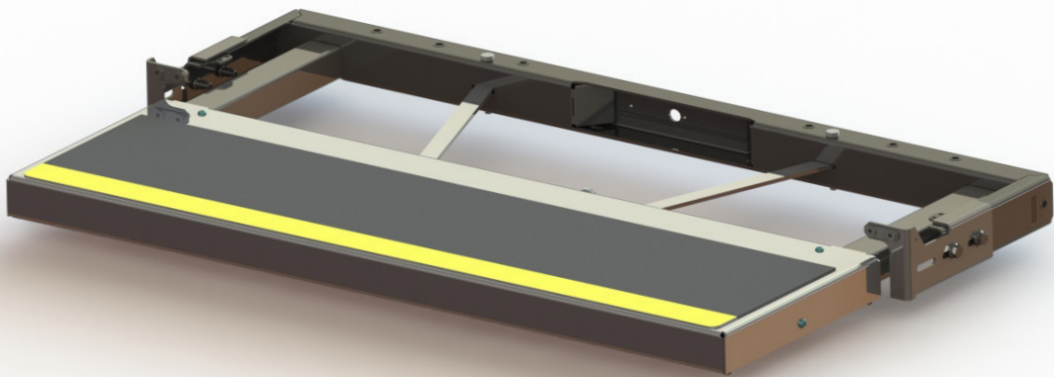
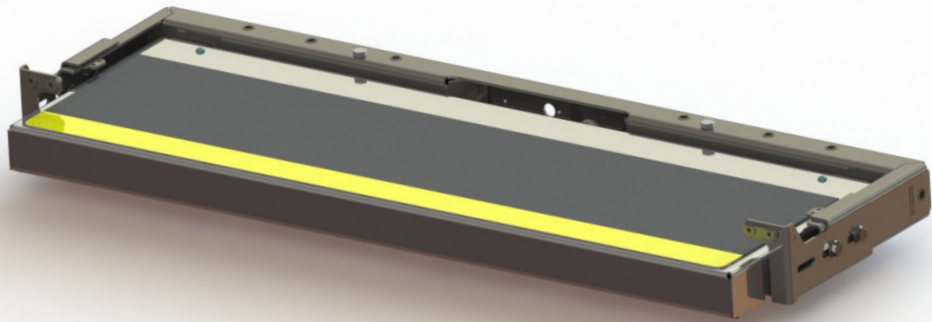
Fully automatic electric step for the side door



www.amf-bruns.de

ELECTRIC STEP

Fully automatic step for the side door



THESE FACTS MAKE ALL THE DIFFERENCE

- » Fully electric step - automatically extends when opening the side door and retracts when closing the door
- » Compact, robust design
- » Anti-slip surface
- » High-quality processing, absolutely weatherproof
- » Powerful motor
- » Visual warning signal (dashboard) when step is extended
- » Pinch protection (step stops in case of an obstacle)
- » No modification to the vehicle body necessary
- » Complies with DIN 75078 and covers 70 % of the vehicle entrance area

TECHNICAL DATA

- » Mounting on side entry
- » Material: Stainless steel
- » Slip resistance: R11
- » Load capacity: 250 kg
- » Operating voltage: 12 V (splash-proof motor/ protection class IP66)
- » Width: 600, 900 or 1,100 mm
- » EMC tested according to EU regulations



AMF-Bruns GmbH & Co. KG | Hauptstraße 101 | D-26689 Apen
Phone +49 (0) 44 89 / 72 72 50 | Fax +49 (0) 44 89 / 62 45
hubmatik@amf-bruns.de

www.amf-bruns.de



DIN EN ISO 9001
REG.-NR. 01 0105027